



If you would like more information please contact FDQ, our friendly team will be happy to help.

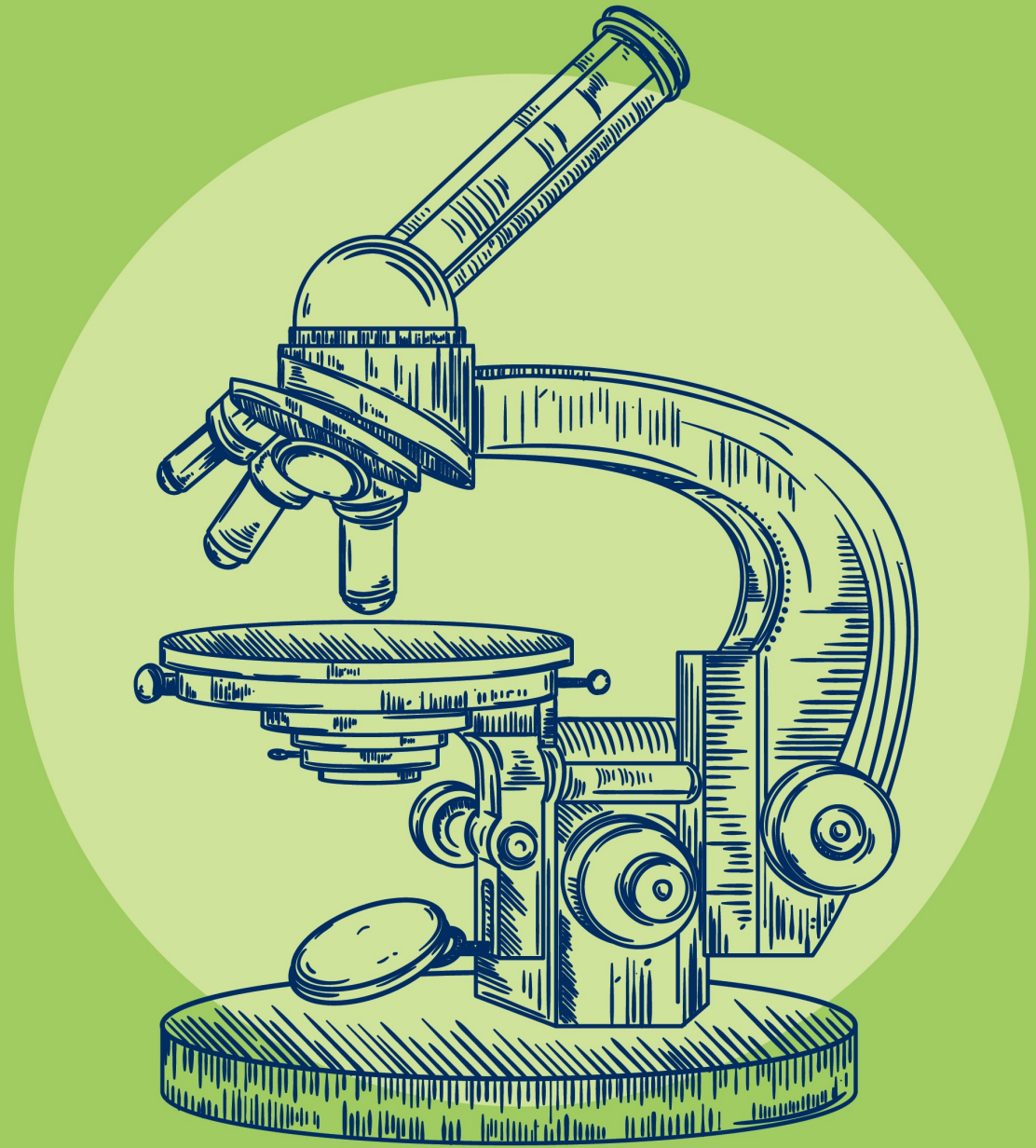
FDQ, Pure Offices
4100 Park Approach
Thorpe Park
Leeds
LS15 8GB

Tel: 0113 3970 395
Email: fdq@fdq.org.uk

Level 3 End-point Assessment for Food Technologist



ST0198
Apprentice Guide



Version 1.0

FDQ Level 3 End-point Assessment for Food Technologist ST0198 - Apprentice Guide

What is the EPA?

The EPA is the final part of your apprenticeship. It is important so prepare well for it! It is designed to confirm you have the skills, knowledge and behaviours needed to become a qualified Food Technologist.

Are you ready for your EPA?

Check that you have completed these Gateway requirements to start your EPA.

- ✓ A completed level 3 Diploma in Food Technology
- ✓ Level 2 Functional Skills in mathematics or GCSE in mathematics
- ✓ Level 2 Functional Skills in English or GCSE in English
- ✓ A Gateway Declaration Form signed by you, your employer and training provider to confirm readiness for EPA

Gateway Period—Workplace Project

At the start of the 12 week Gateway period, you will start a substantial workplace project which will be chosen together by you and your employer. You will submit a written project report 11 weeks after entering Gateway, and present your project findings to the Independent Examiner (IE) at the end of the Gateway period.

Remember!

Your employer and trainer won't enter you for the EPA unless they are sure you are ready and confident to take your EPA.

Practise for your EPA

The EPA is your chance to prove you have the knowledge, skills and behaviours to be a qualified Food Technologist.

Make sure you practise for it!

What to take to the EPA day

- ✓ Your ID (Photographic evidence e.g. passport or driving license)

Reasonable Adjustments

Your employer must inform FDQ if you need any reasonable adjustments for your EPA; for example extra reading time or instructions in larger font. Make the request for adjustments when your employer requests your EPA test.

FDQ is committed to supporting all apprentices and ensuring the EPA experience is conducted in a fair and reliable way

See the FDQ Arrangements for Reasonable Adjustments policy at: www.fdq.org.uk

Timeline

FDQ will send details of the date and time for each of your EPA components to your employer.

Your employer will agree the work-based project that you will be required to complete within the three months EPA period.



What you have to do for your EPA

Your IE will explain the order of each of the EPA components including timings and breaks. You must complete three assessments:

1	Written Knowledge Test (online or paper based)	Time allowed 90 mins	Questions 30 multiple choice questions and 5 short answer questions	Graded Fail/pass/merit/distinction
2	Work Based Project and Presentation	Time allowed 12 Weeks 45—60 mins	Assessments Workplace project report (3000 words) and presentation Project Presentation	Graded Fail/pass/merit/distinction
3	Professional Dialogue and Interview	Time allowed 45-60 minutes	Assessments Set questions to assess behaviours required for the industry	Graded Fail/pass/merit/distinction

See the Employer and Training Provider Handbook for sample tests and more information about the assessments, as well as sample specifications for the project.

What happens after?

FDQ will confirm the final results, including a grade for the EPA to your employer/training provider within 21 days of the EPA day.

When you pass your EPA

You will receive a statement of your results, including a grade, from FDQ.

The Education and Skills Funding Agency (ESFA), on behalf of the Institute for Apprenticeships and Technical Education will send your Apprenticeship certificate to your employer.

Congratulations!

If you don't pass your EPA

If you fail one of the tests, you and your employer have two choices. You can either:

1. Apply to re-take the individual EPA test. You must undertake further learning. FDQ will provide areas to focus on to prepare for a re-take.

You must complete your re-take within 12 weeks of your original EPA day, or you will need to re-take the whole EPA. If a re-take is successfully completed your overall grade will be a maximum of a merit.

2. Appeal to FDQ if you disagree with your result. If you feel you were unfairly assessed then you should speak to your employer and trainer, who will follow the FDQ appeals procedures to help you. www.fdq.org.uk

The FDQ Promise

FDQ want you to do well and promise your EPA will be:

Clear – so you understand what you have to do on the day.

Supportive – we give your employer and trainer lots of information in the Employer and Training Provider Handbook that will help you prepare for your EPA– make sure you use it!

Fair – our Independent Examiners (IEs) are industry professionals trained to be fair, reliable and to give you every opportunity to succeed.

Consistent – after your EPA, your examiner will submit a recommended grade which will be moderated at FDQ HQ for Quality and Assurance purposes.