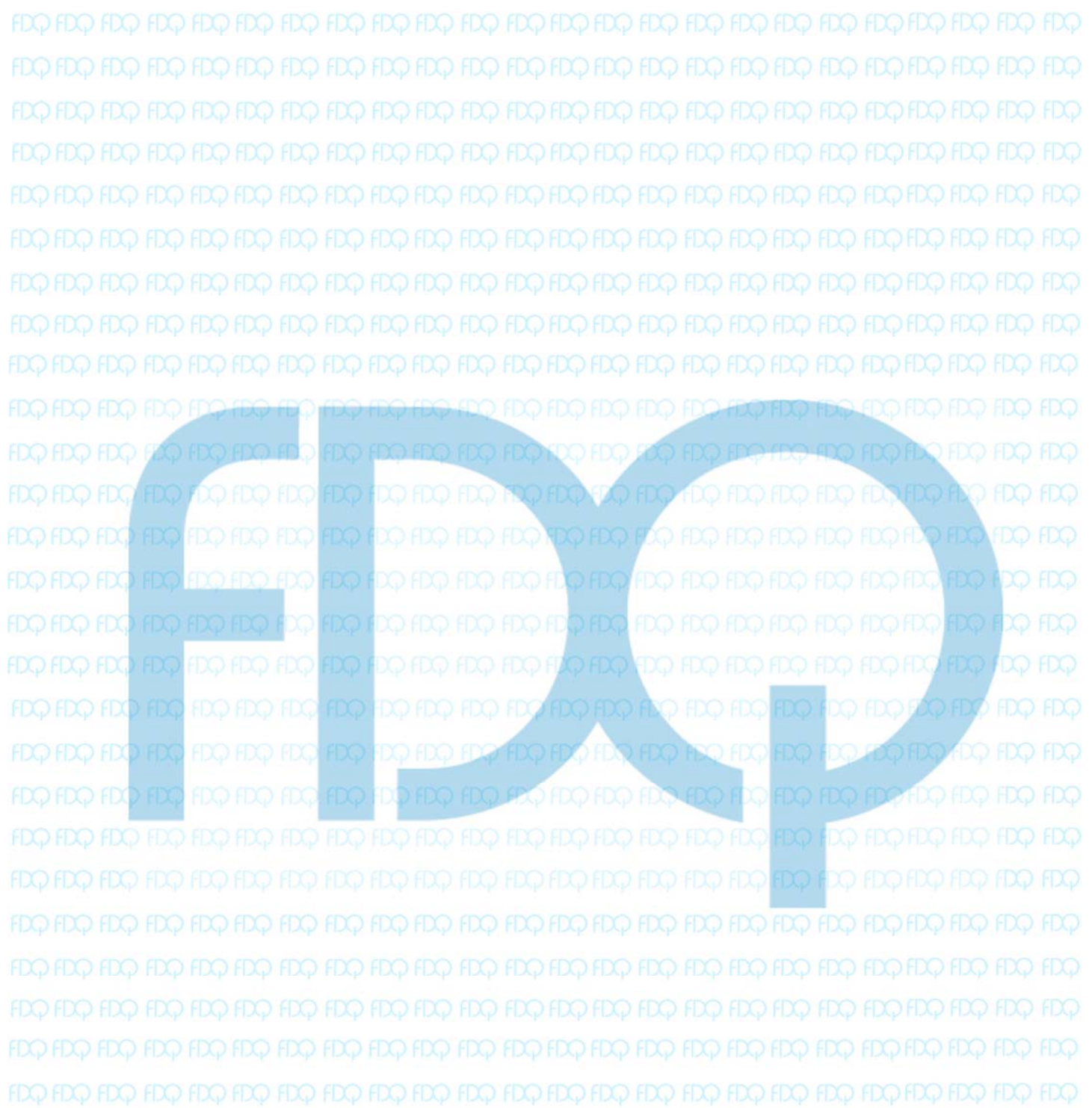
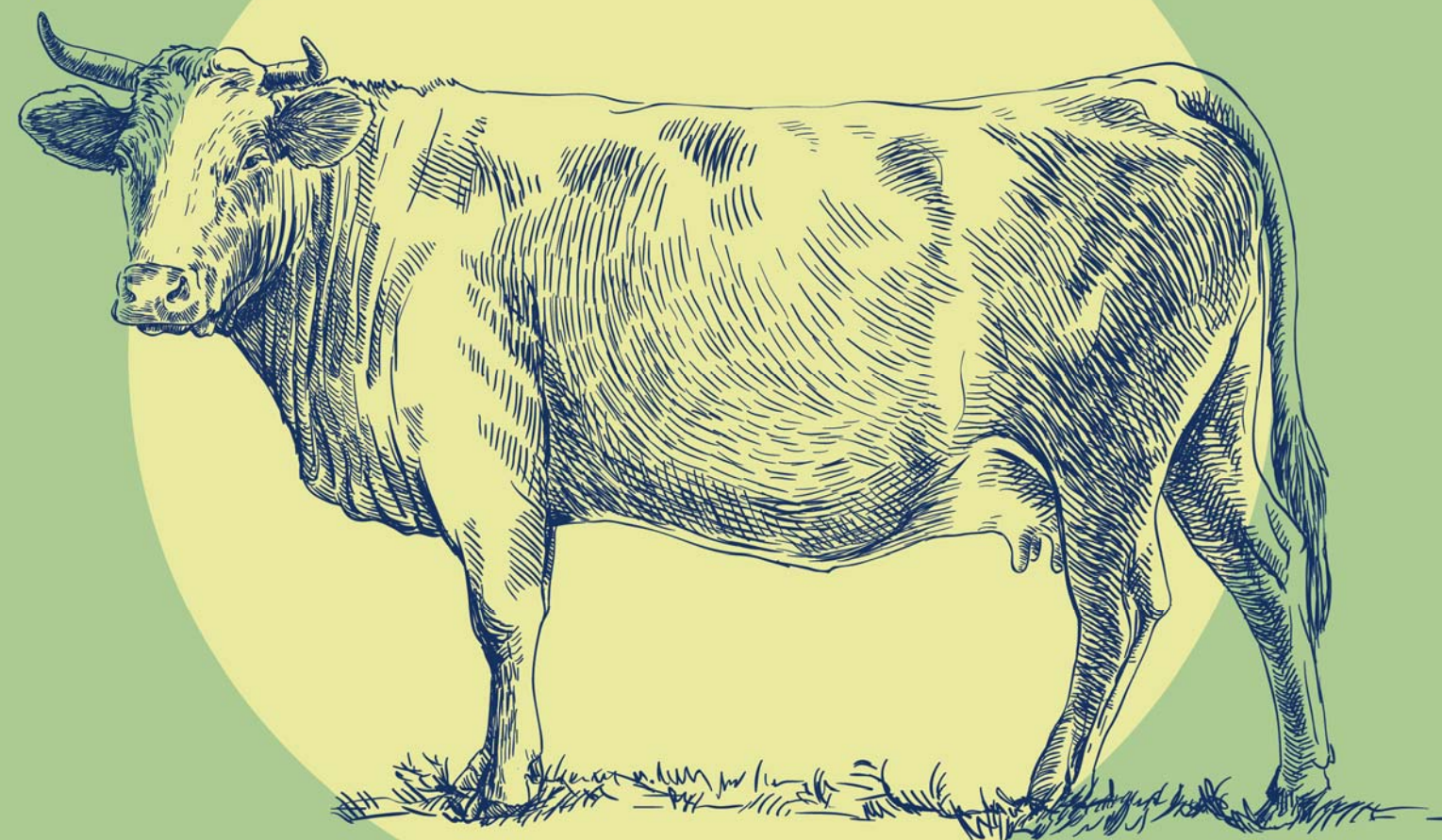


Level 2 End-point Assessment for Process Butcher

ST0078
Apprentice Guide



If you would like more information please contact FDQ, our friendly team will be happy to help.

FDQ,
Pure Offices
4100 Park Approach
Thorpe Park
Leeds
LS15 8GB

Tel: 0113 3970 395
Email: fdq@fdq.org.uk



FDQ Level 2 End-point Assessment for Butcher (Process) ST0078 Apprentice Guide

What is the EPA?

The EPA is the final part of your apprenticeship. It is important so prepare well for it! It is designed to confirm you have the skills, knowledge and behaviours needed to become a qualified Butcher (Process).

Are you ready for your EPA?

Check that you have completed these Gateway requirements to start your EPA.

- ✓ A logbook of evidence completed and signed by you, your employer and training provider prior to Gateway
- ✓ Level 2 Award in Food Safety for Manufacturing (Meat & Poultry)
- ✓ Level 2 Award in Health and Safety in the Food Supply Chain Business
- ✓ Level 2 Award in Knife Skills for Food Processing
- ✓ Level 1 Functional Skills in English or GCSE in English
- ✓ Level 1 Functional Skills in mathematics or GCSE in mathematics
- ✓ Attempted the tests for Level 2 Functional Skills in English and Mathematics
- ✓ A Gateway Declaration Form signed by you, your employer and training provider to confirm readiness for EPA

Remember!

Your employer and trainer won't enter you for the EPA unless they are sure you are confident and ready to take your EPA.

Practise for your EPA

The EPA is your chance to prove you have the knowledge, skills and behaviours to be a qualified Butcher.

Make sure you practise for it!

What to take to the EPA day

- ✓ Your ID (Photographic evidence e.g. passport or driving license)
- ✓ Logbook
- ✓ Tools/PPE

Reasonable Adjustments

Your employer must inform FDQ if you need any reasonable adjustments for your EPA; for example extra reading time or instructions in larger font. Make the request for adjustments when your employer requests your EPA test.

FDQ is committed to supporting all apprentices and ensuring the EPA experience is conducted in a fair and reliable way.

See the FDQ Arrangements for Reasonable Adjustments policy at: www.fdq.org.uk

Timeline

FDQ will send details of the date and time of your EPA to your employer.

You have one month to complete your EPA.

Your EPA Manager will send your observation plan to your employer five days before your EPA, to help you prepare.



What you have to do at the EPA Day

Your Independent Examiner will explain the order of the day to you including timings and breaks. You must complete three assessments:

| | | | | |
|---|--|-----------------------------------|---|---|
| 1 | Multiple Choice Test (online or paper based) | Time allowed 90 minutes | Questions 60 multiple choice | Graded Fail/pass/pass with excellence |
| 2 | Practical Skills Assessment | Time allowed 75 minutes | Activities to be observed Job related tasks | Graded Fail/pass/pass with excellence |
| 3 | Vocational Competence Discussion | Time allowed 30 minutes | Activities to be observed Job related questions | Graded Fail/pass/pass with excellence |

See the Employer and Training Provider Handbook for sample tests and more information about the assessments.

What happens after?

FDQ will confirm the final results, including a grade for the EPA to your employer/ training provider within 8 weeks of the EPA day.

When you pass your EPA

You will receive a statement of your results, including a grade, from FDQ.

The Education and Skills Funding Agency (ESFA), on behalf of the Institute for Apprenticeships and Technical Education will send your Apprenticeship certificate to your employer.



As a qualified Butcher (Process) you may apply to join the Institute of Meat.

Congratulations!

The FDQ Promise

FDQ want you to do well and promise your EPA will be:

Clear – so you understand what you have to do on the day.

Supportive – we give your employer and trainer lots of information in the Employer and Training Provider Handbook that will help you prepare for your EPA– make sure you use it!

Fair – our Independent Examiners are industry professionals trained to be fair, reliable and to give you every opportunity to succeed.

Consistent – after your EPA, your examiner will submit a recommended grade which will be moderated at FDQ HQ for Quality and Assurance purposes.

If you don't pass your EPA

The result statement will indicate areas of weakness. If you fail one of the tests, you and your employer have two choices. You can either:

1. Apply to re-sit or re-take the individual EPA test. You do not have to complete further learning for a re-sit; but if you do need more learning, you can re-take the tests. FDQ will provide areas to focus on to prepare for a re-take.
2. Appeal to FDQ if you disagree with your result. If you feel you were unfairly assessed then you should speak to your employer and trainer, who will follow the FDQ appeals procedures to help you. www.fdq.org.uk

You must complete your re-sit or re-take within 2 months of your original EPA day, or you will need to re-sit or re-take the whole EPA.